

Epson TM-T88V

POS Thermal Printer



The mPOS-friendly TM-T88V is the industry's leading POS thermal printer. It is fast, reliable, easy to configure and supports all the leading mobile operating systems including iOS, Android and Windows.

High-speed, high-resolution text and graphics printing

Epson's TM-T88V delivers all the features you need to ensure quick transactions for your customers. It offers the fastest printing in its class for both receipts and graphics with speeds up to 300mm/second, flexible connectivity options and best-in-class reliability. And it's the first printer in the industry to offer 16 levels of grayscale to ensure clear, crisp graphics.

Multi-platform printing made easy

Epson's TM-T88V is designed to work right out of the box with mobile POS applications. With Epson's unique ePOS-Print technology, the TM-T88V can print directly from any devices running an iOS, Android or Windows operating system with a WiFi or Bluetooth connection, using a HTML5 browser or native application.

Compatible and ready to go

The TM-T88V printer is compatible with all of today's best-of-breed POS systems and the latest industry-standard wireless security protocols. The printer supports 802.11a/b/g/n with 2.4GHz/5GHz compatibility or Bluetooth® 2.1 + EDR.

It also offers Serial, Ethernet and USB options, enabling flexible mobile and web-based receipt printing.

Easy to use. Easy to maintain.

The TM-T88V is easy to configure and install and is packed with easy-to-use features including drop-in paper loading, long-lasting autocutter and easy-to-read LEDs.

Reduce costs with paper saving options

With Epson's TM-T88V paper-saving options you can reduce your paper usage by up to 30%. The paper-saving settings are easy to use and do not affect print quality, readability or font size.

Reliability you can count on

With a MCBF of 70 million lines and an autocutter life of 2 million cuts, the TM-T88V delivers best-in-class reliability so critical in high volume environments.

Industry-leading four-year warranty

The TM-T88V is backed by Epson's industry-leading service and support programs and comes with a four-year limited warranty.

- mPOS-friendly printer compatible with iOS, Android and Windows mobile devices
- DHCP enabled model available for easy IP/network configuration
- Printer class model available for easy connection and discovery
- Supports 802.11a/b/g/n with 2.4GHz/5GHz compatibility and Bluetooth® 2.1 + EDR
- Easy to configure and install
- Fast printing up to 300mm/sec for both text and graphics
- Special print options reduce paper usage up to 30%
- Industry-leading four-year limited warranty

The Industry's Leading POS Printer for Retail and Food Service

All the features you need

- mPOS-friendly printer compatible with iOS, Android and Windows mobile devices
- DHCP enabled model available for easy IP/network configuration
- Printer class model available for easy connection and discovery
- Supports 802.11a/b/g/n with 2.4GHz/5GHz and Bluetooth® 2.1 + EDR
- Dual interfaces including built-in USB plus one UIB interface
- Easy to configure and install
- Fast printing up to 300mm/second for both text and graphics
- Special print options reduce paper usage up to 30%

Printer

Print method	Thermal line printing
Print speed	Max. 11.8"/sec (300mm) graphics and text; 2.4"/sec for ladder and 2D barcodes
Print fonts	
Fonts	Font A (default): 12 x 24; Font B: 9 x 17 (including 2-dot horizontal spacing)
Column capacity (A, B)	80mm: 42/56 columns; 58mm model: 30/40 columns
Character size	Font A: 1.41 x 3.39; Font B: 0.99 x 2.40 (W x H mm)
Character set	95 Alphanumeric, 18 International, 128 x 43 Graphic (including user-defined page)
Barcode	Traditional/Simple Chinese, Thai, Japanese, Korean UPC-A/E, CODE 39/93/128, EAN8/13, ITF, CODABAR 2D symbols: PDF417, QR-CODE, MaxiCode, Composite Symbology, GS1-128, GS1 DataBar Omnidirectional /Truncated/Limited/Expanded
Paper dimensions	80mm: 79.5 ± 0.5 (W) x 83mm diameter (3.13" ± 0.02" x 3.27") 58mm: 57.5 ± 0.5 (W) x 83mm diameter (2.26" ± 0.02" x 3.27")
Paper thickness	55 – 80 µm
Reliability	
MTBF	360,000 hours
MCBF	70,000,000 lines
Autocutter	2 million cuts
Current consumption	Approx. 1.8A (mean)

General information

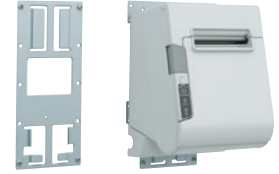
Interface	Built-in USB interface + another selection: serial RS-232C, parallel IEEE-1284, high-speed USB, powered USB, Ethernet 10/100Base-T/TX, 802.11b/g/n (2.4GHz) and 802.11a/n (5GHz) or Bluetooth 2.1 + EDR
Supported mobile operating systems	WiFi (802.11): iOS, Android and Windows Bluetooth: iOS, Android and Windows
Data buffer	Receive: 45 bytes or 4KB, selectable; user-defined: 12KB; macro: 2KB; NV graphics: 256KB; NV user: 1KB; page mode area: 106K
Power	24 VDC ± 7%
D.K.D. function	2 drivers
Overall dimensions	5.71 x 7.68 x 5.83" (145 x 195 x 148mm) (W x D x H)
Weight	1.6 kg (3.5 lbs)
Color	Epson Dark Gray (EDG), Epson Cool White (ECW)
Factory options	Power supply cover, PS-180 AC adapter, one wall-hanging bracket, affixing tape and Connect-It interfaces
OS support	Microsoft® Windows 7, Vista, XP, 2000; Mac OS X v10.4, v10.5, v10.6 (Power PC/Intel Processor) and Linux
EMI standards	FCC/ICES-003 Class A
Safety standards	UL1950/CSA C22.2 No. 950
Warranty	Four-year limited warranty

What's in the box

- TM-T88V printer
- Thermal roll paper (starter roll for testing)
- Cable connector cover
- AC adapter w/AC cord (ENERGY STAR® SKUs)
- Set-up guide
- Power switch cover
- CD (User Manual, Technical Manual, drivers, utilities)



Optional power supply case secures cords under printer.



Optional mounting bracket available for hanging printer on wall.



07/2014
CPD-41755

