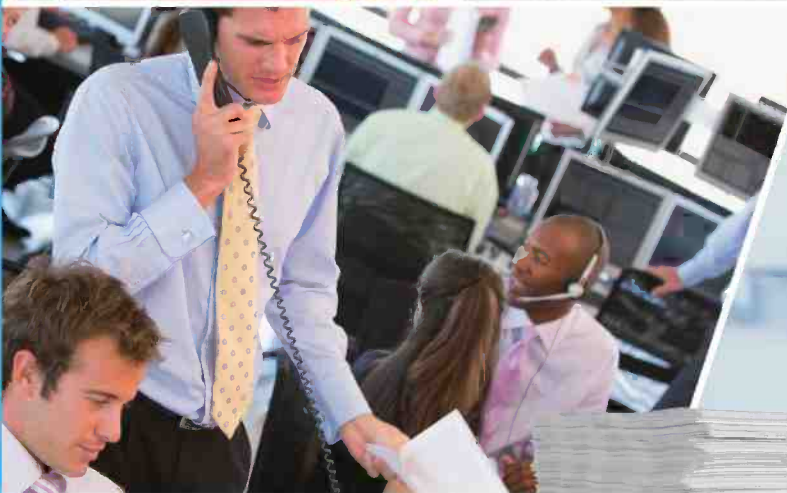


Panasonic

FAST AND RELIABLE



ToughFeed



**KV-S8127 AND KV-S8147
SCANNING SOLUTIONS**

INCREASE WORK EFFICIENCY WITH

FASTER SCANNING

High-Speed, High-Volume Scanning

A high-speed engine, made possible by advances in hardware image processing technology, provides maximum efficiency when processing large volumes of documents.

140_{ppm}
280_{ipm}
(KV-S8147)

120_{ppm}
240_{ipm}
(KV-S8127)

ADF
750 sheets
(LTR/A4)
(LDG/A3 500 sheets)

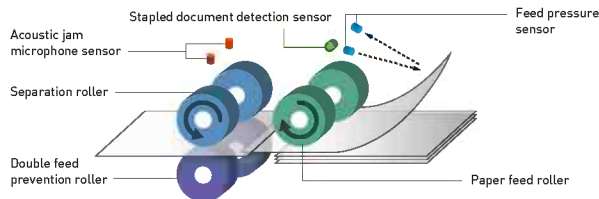
RELIABLE PAPER FEED

ToughFeed

TOUGHFEED

Document Protection

Multiple sensors check the paper feed conditions to automatically optimize the scanning of various documents while preventing them from being damaged.



- **Acoustic jam microphone sensor** Scanning is stopped when an abnormal noise is detected during the paper feed.
- **Feed pressure sensor** Detects the amount of pressure being applied by the feed roller and automatically adjusts the height of the feed tray.
- **Stapled document detection sensor** Used to detect various types of stapled documents to immediately stop the scanner when staples are detected.

DOUBLE FEED RETRY (KV-S8147 ONLY)

If a double feed is detected, the double feed retry function will return the documents to the feed tray automatically, then rescan the documents again.



Double Feed Skip (DFS)

Double Feed Skip (DFS) provides users the ability to ignore and skip a double feed detection and continue scanning without restarting the scan process. This feature is designed for applications where special document types are fed, such as envelopes or documents with labels on them.

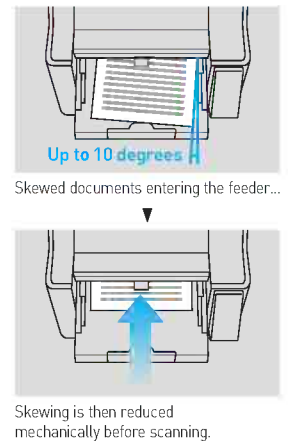
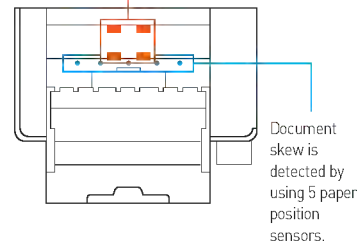
DFS button



NEW MECHANICAL DESKEW

The KV-S8147 is capable of correcting up to 10 degrees of physical document skew during the feeding process.

Document skewing is corrected using an independent feed motor and roller system.

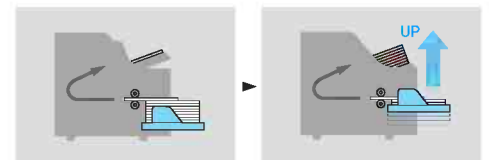


ADJUSTABLE FEED/EXIT TRAY

The document feed tray automatically lifts documents to the optimal position for reliable feeding.

Feed Tray

The feed tray quickly rises and maintains optimal pressure against the feed rollers.



Exit Tray

The exit tray remains at the optimal height from the scanners exit rollers to prevent fluctuations.





HIGH DURABILITY, LOW MAINTENANCE

LONG-LIFE ROLLER

The KV-S8127 and KV-S8147 have a rated feed roller replacement life of 600,000 scanned pages. Panasonic offers two feed roller kit options depending on actual scanning volume.

Roller Exchange Kit

Model No.	KV-SS064	KV-SS065
Contents	Single Replacement Roller Kit <ul style="list-style-type: none"> • Feed roller unit (1 piece) • Double feed prevention roller unit (1 piece) • Separation roller unit (1 piece) 	Multi Feed Roller Kit <p>*Trained technician or operator recommended.</p> <ul style="list-style-type: none"> • Feed roller (12 pieces) • Double feed prevention roller (12 pieces) • Separation roller (12 pieces) • Double feed prevention roller torque limiter (3 pieces)
Roller Replacement	600,000 sheets	3,600,000 sheets*

* KV-SS065 is a set with parts for six replacements. 1 replacement = 600,000 sheets

HIGHLY DURABLE GLASS COATING

The use of a highly durable glass coating reduces vertical streaking of images due to the effects of paper dust, and decreases the required frequency of maintenance.

EASY MAINTENANCE

Maintenance of the paper transport path is easy because the ADF door opens widely. In addition, the built-in cleaning mode rotates the conveyor and exit rollers to easily clean the entire surface of each without manually rotating the rollers.



FULL-COLOR LCD

An easy to see, full color LCD display provides users with simple access to the scanner's built-in settings and maintenance counters.



Job screen

Menu screen

COMPARE THE PERFORMANCE of PANASONIC SCANNERS

ENGINEERED FOR THE REAL WORLD

TECHNICAL SPECIFICATIONS		PHYSICAL SPECIFICATIONS	
Image Sensor Type	3 Line Color Contact Image Sensor Automatic Black and White Background Reference	Power Requirements²	AC 100-120 V, 50/60 Hz, 2.7 A AC 100-240 V, 50/60 Hz, 2.7-1.5 A
Light Source	RGB LED	Power Consumption	Maximum (Scanning): 140W or less Minimum (Ready): 35W or less Sleep: 2.0 W or less Power Off: 0.5 W or less
Optical Resolution	100 – 600 dpi (1 dpi step) 1,200 dpi (Interpolated) Optical: 300 dpi / 600 dpi (Automatic switch)	Dimensions (WxDxH)	21.5 in. x 18.7 in. x 17.1 in. (545 x 474 x 435 mm)
Output Resolution	Color: 24-bit Grayscale: 8-bit Monochrome: 1-bit	Weight	98 lbs. (44.4 kg)
Output Color Depth	Color: 24-bit Grayscale: 8-bit Monochrome: 1-bit	Inbox Contents	Quick Installation Guide, Power cord, USB 3.0 Cable, Panasonic Software CD-ROM, Double Feed Prevention Roller, Shading Paper and Attachment Guide
Image Processing Function	Automatic Brightness Adjustment, Automatic Image Emphasis, Dynamic Threshold, White Level From Paper, Automatic Separation, Noise Reduction, Auto Preview, Auto Rescan, Multi color Dropout, Dither, Error Diffusion Detection	Bundled Software	Panasonic Image Capture Plus, Panasonic User Utility, Universal TWAIN Driver, ISIS Driver, WIA Driver
		Options	Roller Exchange Kit: KV-SS064 (600K Roller Kit) and KV-SS065 (3.6M Roller Kit), Roller Cleaning Paper: KV-SS03, Pre and Post Imprinters: KV-SS014, Ink cartridge: KV-SS021, Kofax® VRS Elite 5 (KV-S8127-V and KV-S8147-V), Network Scanning Option: KV-SSM100, Flatbed Scanner Option: KV-SS080, Site Central Management Software
		OS Support	Windows® XP SP3 (32bit/64bit), Windows Vista® SP2 (32bit/64bit), Windows® 7 (32bit/64bit), Windows® 8 (32bit/64bit), Windows® 8.1 (32bit/64bit), Windows® 10 (32bit/64bit), Windows Server® 2003 SP2 (32bit/64bit), Windows Server® 2003 R2 SP2 (32bit/64bit), Windows Server® 2008 SP2 (32bit/64bit), Windows Server® 2008 R2 SP1 (64bit), Windows Server® 2012 (64bit)
Scanning Speed¹	Simplex: Up to 120 ppm (KV-S8127) Up to 140 ppm (KV-S8147) Duplex: Up to 240 ipm (KV-S8127) Up to 280 ipm (KV-S8147)	Feed Detection Features	Control Sheet Detection, Long Paper, Intelligent Double Feed Detection, Stapled Document Detection, Acoustic Jam Detection
ADF Capacity	Up to 750 Sheets: 21 lbs. (80 g/m2)*	Other Functions	Barcode Detection, Length Control, Patch Code Detection (Ttype 2, 3, T), Double Feed Skip, Double Feed Retry (KV-S8147 only), Mechanical Deskew (KV-S8147 only), 100 Programmable Work-flows, Long Paper Mode
Document Size	ADF Manual Feeding: 1.9 in. x 4.33 in. to 12.09 in. x unlimited (KV-S8127) 1.9 in. x 2.75 in. to 12.09 in. x unlimited (KV-S8147) ADF Automatic Feeding: 1.9 in. x 2.75 in. to 12.09 in. x 17 in.	Warranty	6 Months On-Site
Weight (Thickness):	U-Turn Path: 5.2 lbs. - 68 lbs. Manual Path: 5.2 lbs. - 146 lbs.	Service Options	Next Business Day Onsite & Pro-Tech Service Available
Interface	USB 3.0 interface		

*LDG/A3: Up to 500 sheets.

¹ The scanning speed differs depending on the host computer, the operating system, the application, the measuring method, the quantity of data in the image, and the paper type. The scanning speed depends on a measuring method of Panasonic.

² The power requirement differs depending on the country/area.

Streamline your scanning process

The KV-S8127 and KV-S8147 high-volume production scanners, mark the latest additions to Panasonic's line of document scanners. Designed for banks, government, service bureaus and any high volume scanning environment. The KV-S8100 series delivers top of the line features and functionality to help increase efficiency and decrease production scanning costs.

Both models support a large capacity of 750 sheets via the built-in ADF*, advanced hardware image processing, and Panasonic's Toughfeed intelligent feed control for scanning a wide range of documents from thin paper to cardboard. The highly durable, long life rollers can scan up to 600,000 documents between replacements.

To find out more about Panasonic Scanning Solutions visit us.panasonic.com/scanners or call 877-207-0035 to speak to a Panasonic Sales Rep

